

1

2

3

4

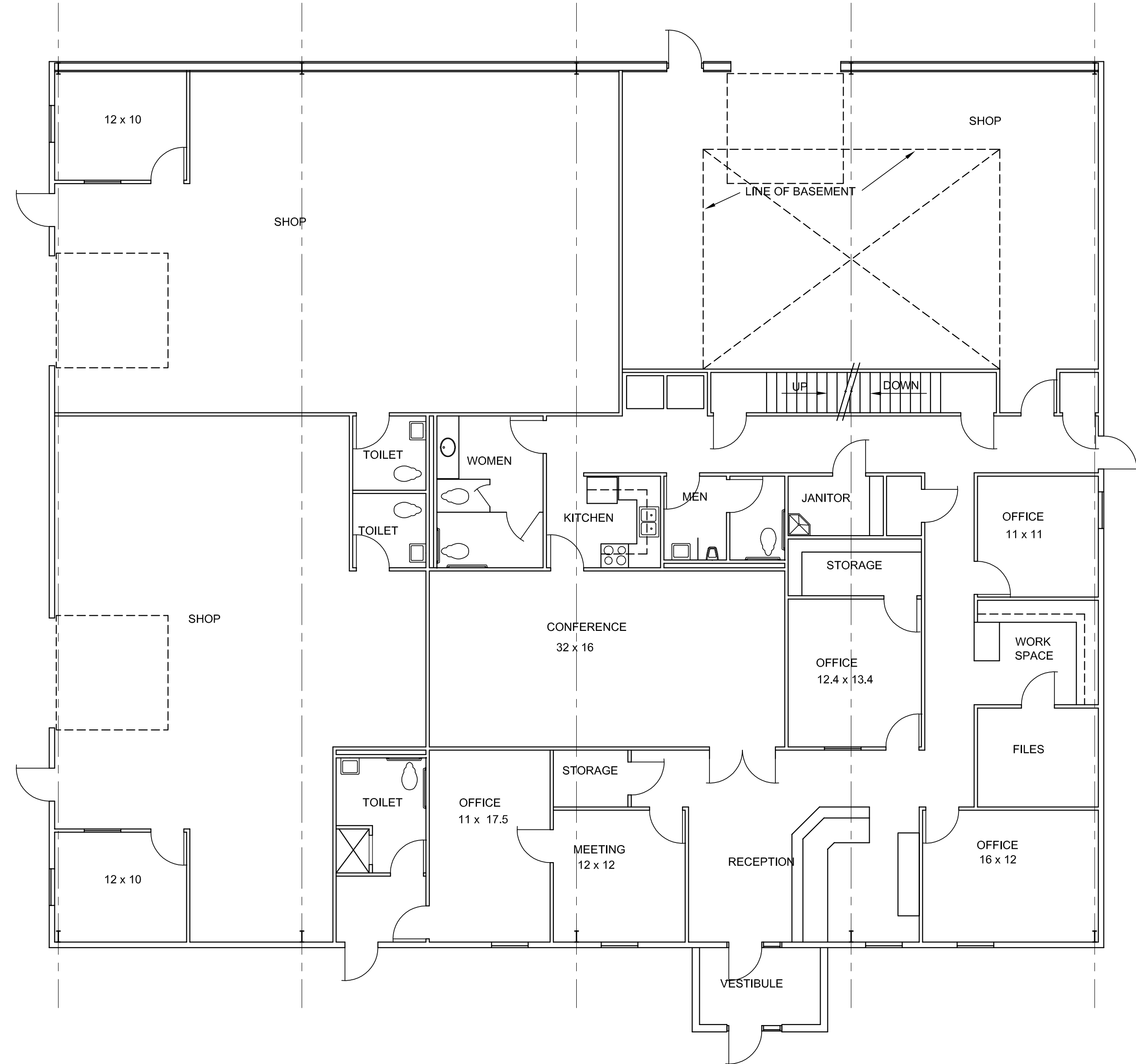
5

D

C

B

A



A1 FLOOR PLAN
1/8"=1'-0"

THIS DOCUMENT IS RELEASED ON 8/9/2012
FOR THE PURPOSE OF INTERIM REVIEW
UNDER THE AUTHORITY OF JIM C. DOCHE,
R.A., LICENSE #3936. IT IS NOT TO BE USED
FOR REGULATORY APPROVAL,
CONSTRUCTION, BIDDING OR PERMIT
PURPOSES.

**NEW OFFICE BUILDING
FOR THE
DUMAS ECONOMIC
DEVELOPMENT CORPORATION**

DUMAS, TEXAS

KEY PLAN

NO.	DATE	DESCRIPTION

ISSUING OFFICE: AMARILLO PROJECT NO: 0939.12